

# The **MegaM@Rt<sup>2</sup>** ECSEL Project

**MegaModelling at Runtime – Scalable Model-based  
Framework for Continuous Development and Runtime  
Validation of Complex Systems**



# ECSEL Joint Undertaking

Electronic Components and Systems for European Leadership

ECSEL Joint Undertaking is a EU-driven, public-private partnership,  
funding innovation in electronic components and systems.



**MegaM@Rt<sup>2</sup>**



**MegaM@Rt<sup>2</sup>**



**MegaM@Rt<sup>2</sup>**

What do we propose?



  
**CLEARSY**  
SYSTEMS ENGINEERING

**DESIGN**



**RUNTIME PHASES**

  
**AINACOM**



**BOMBARDIER**

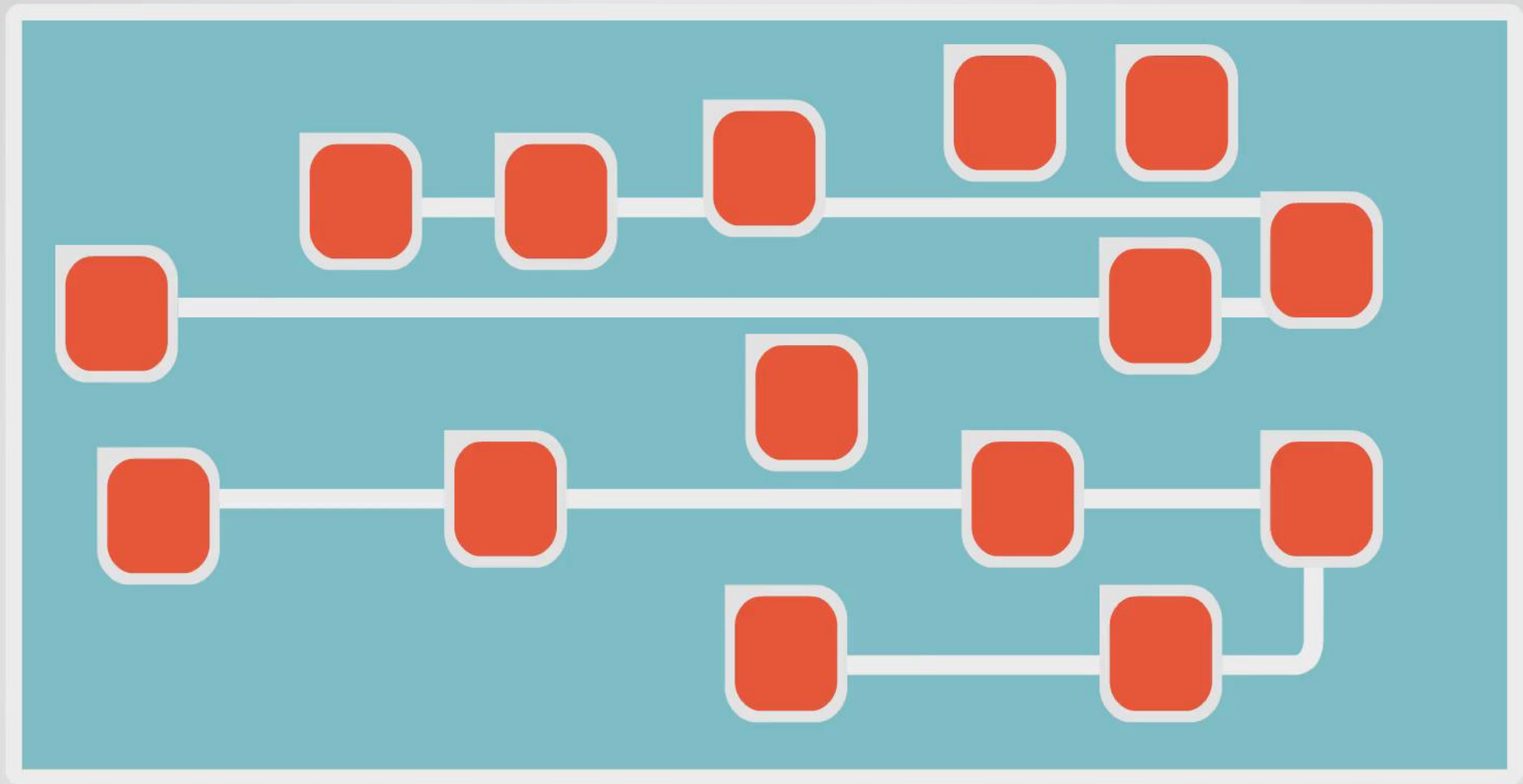
IK4  IKERLAN  
Research Alliance

**THALES**  
**MegaM@Rt**

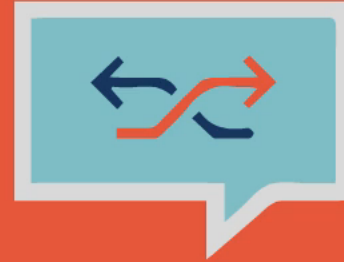
**NOKIA**







**EXECUTION PLATFORMS**



**CONTINUOUS**

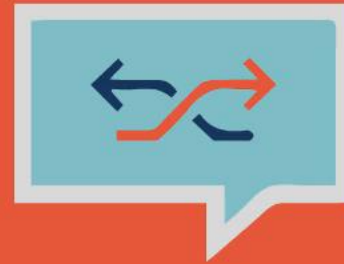


**DEVELOPMENT**

**RUNTIME VALIDATION**

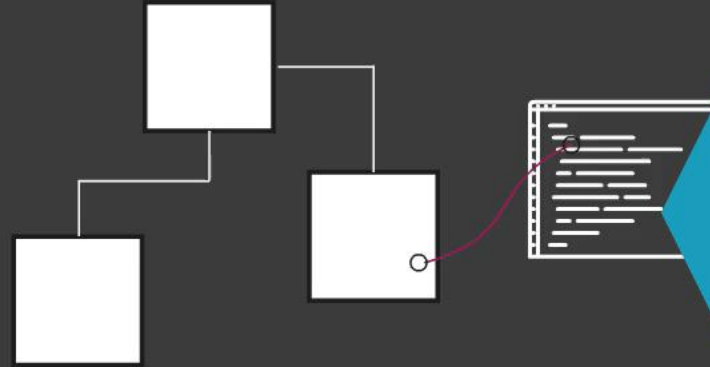
**IMPLEMENTATION**

**EXECUTION PLATFORMS**



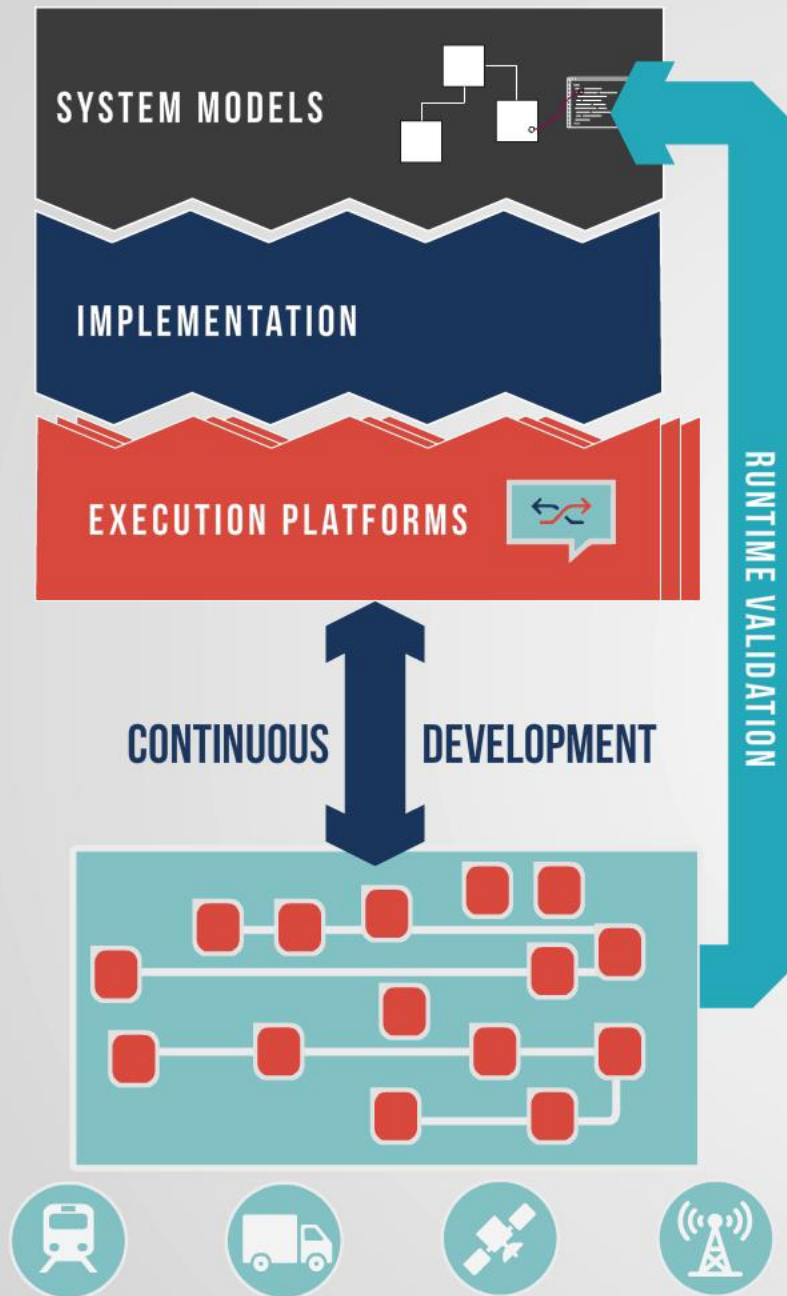
**RUNTIME VALI**

# SYSTEM MODELS



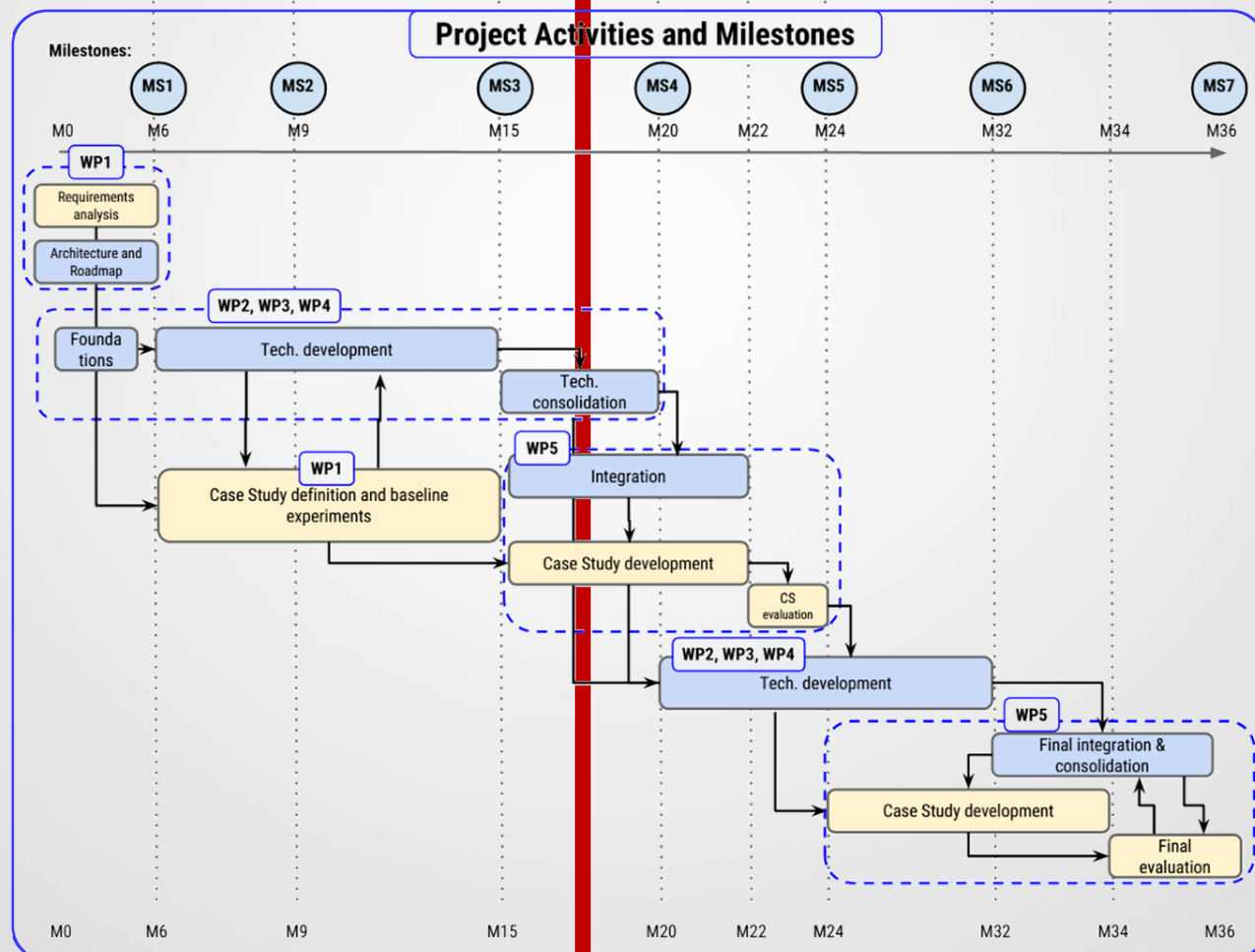
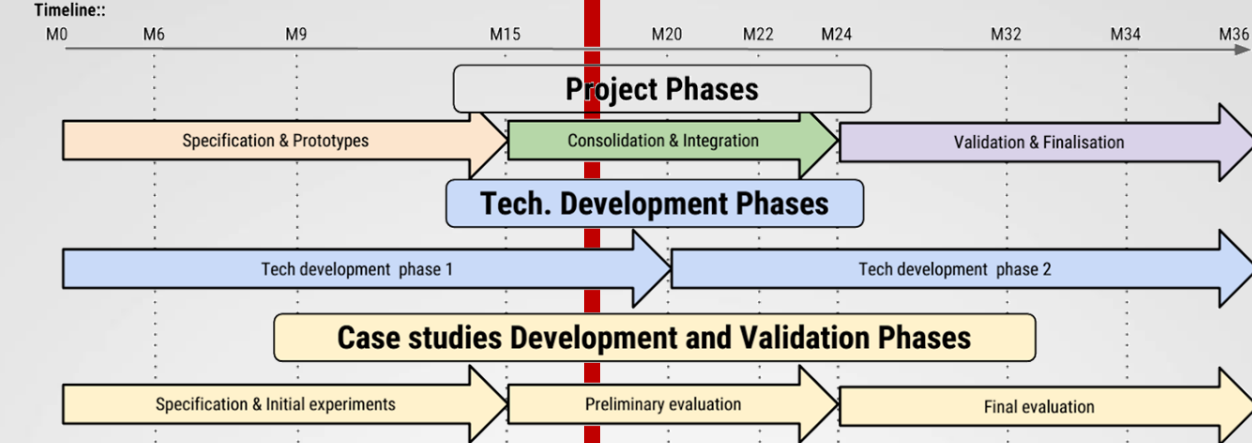
# IMPLEMENTATION



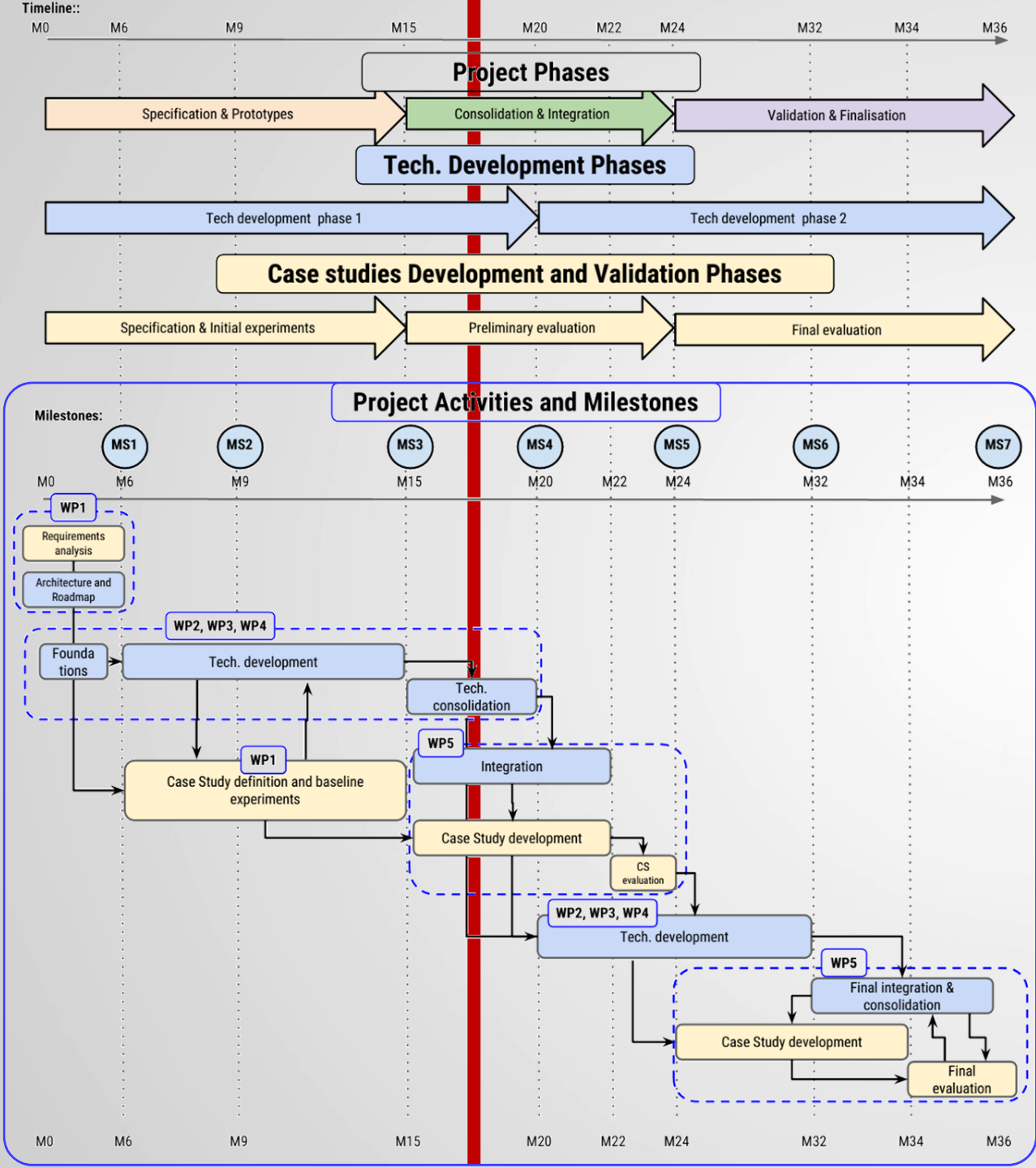


- WP1 Case Study Requirements Analysis & Architecture Specification
- WP2 MegaM@Rt2 System Engineering
- WP3 MegaM@Rt2 Runtime Analysis
- WP4 MegaM@Rt2 Global Model & Traceability Management
- WP5 Integration, Case Study Development & Evaluation
- WP6 Dissemination and Exploitation
- WP7 Management.

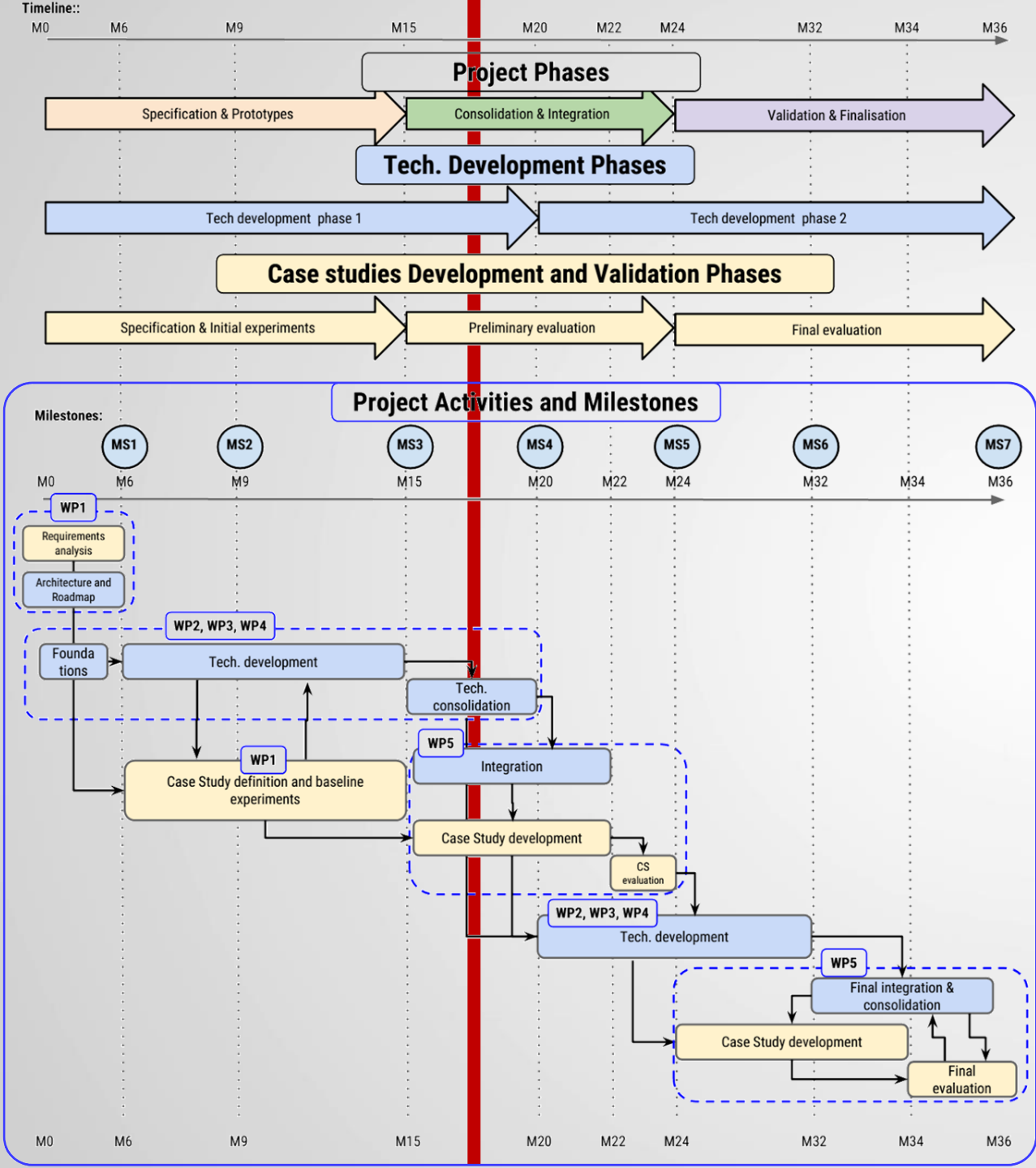
Where are we now?



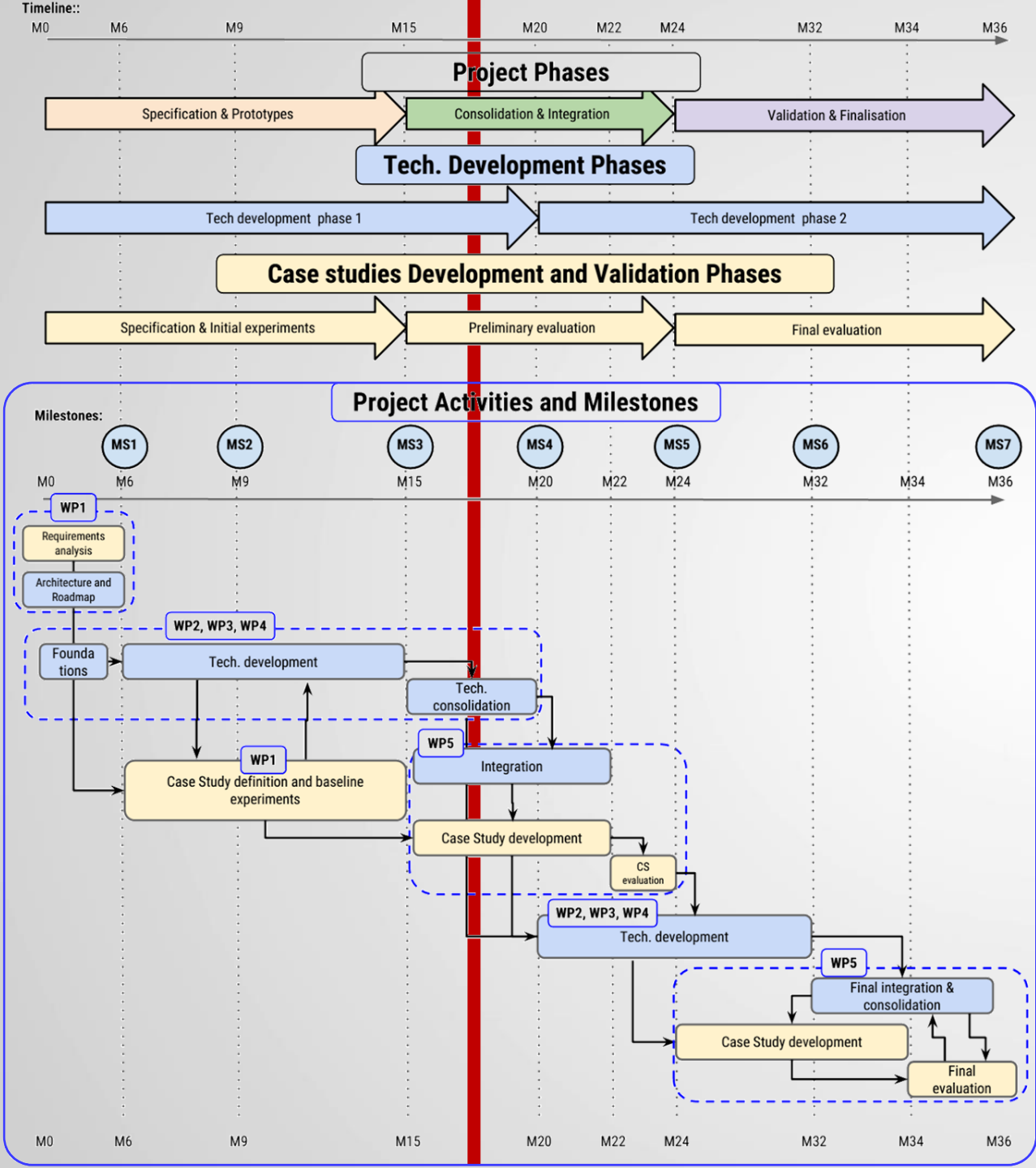




- **D1.1 Industry requirements specification**
- **D1.2 Architecture specification and roadmap (Initial version)**
- **D1.3 Case studies scenarios definition**
- **D1.4 Architecture specification and roadmap (Final version)**
- D2.1 Foundations for Model-driven Design Methods
- D2.2 MegaM@Rt2 design tool set specification
- D2.3 MegaM@Rt2 design tool set (Initial version)
- D3.1 Foundations for Model-Based Runtime Methods
- D3.2 Specification of the MegaM@Rt2 Runtime Analysis tool set
- D3.3 MegaM@Rt2 Runtime tool set (Initial version)
- D4.1 Foundations for Model Management and Traceability
- D4.2 Specification of the MegaM@Rt Model Management & Traceability tool set

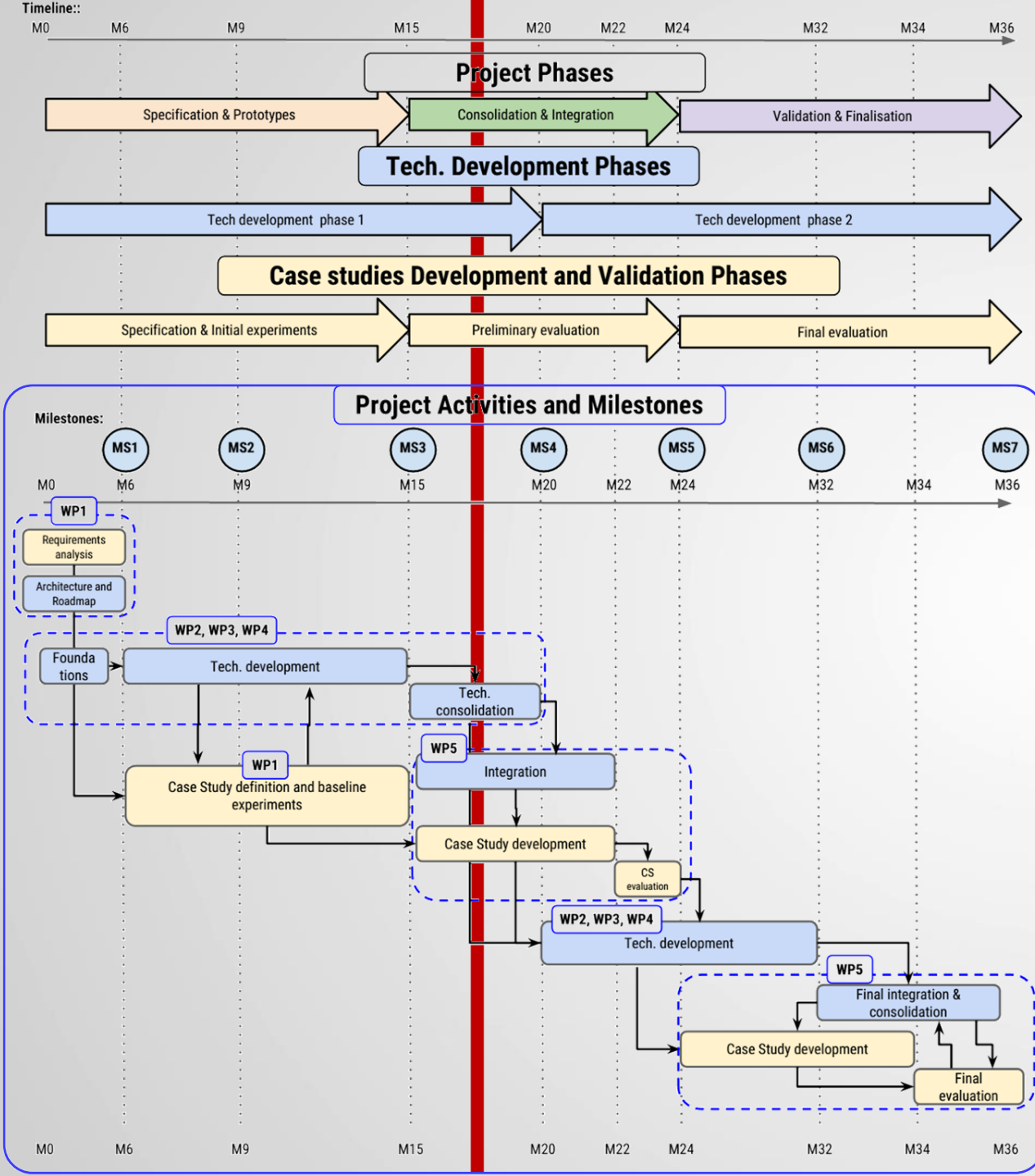


- D1.1 Industry requirements specification
- D1.2 Architecture specification and roadmap (Initial version)
- D1.3 Case studies scenarios definition
- D1.4 Architecture specification and roadmap (Final version)
- **D2.1 Foundations for Model-driven Design Methods**
- D2.2 MegaM@Rt2 design tool set specification
- D2.3 MegaM@Rt2 design tool set (Initial version)
- **D3.1 Foundations for Model-Based Runtime Methods**
- D3.2 Specification of the MegaM@Rt2 Runtime Analysis tool set
- D3.3 MegaM@Rt2 Runtime tool set (Initial version)
- **D4.1 Foundations for Model Management and Traceability**
- D4.2 Specification of the MegaM@Rt Model Management & Traceability tool set

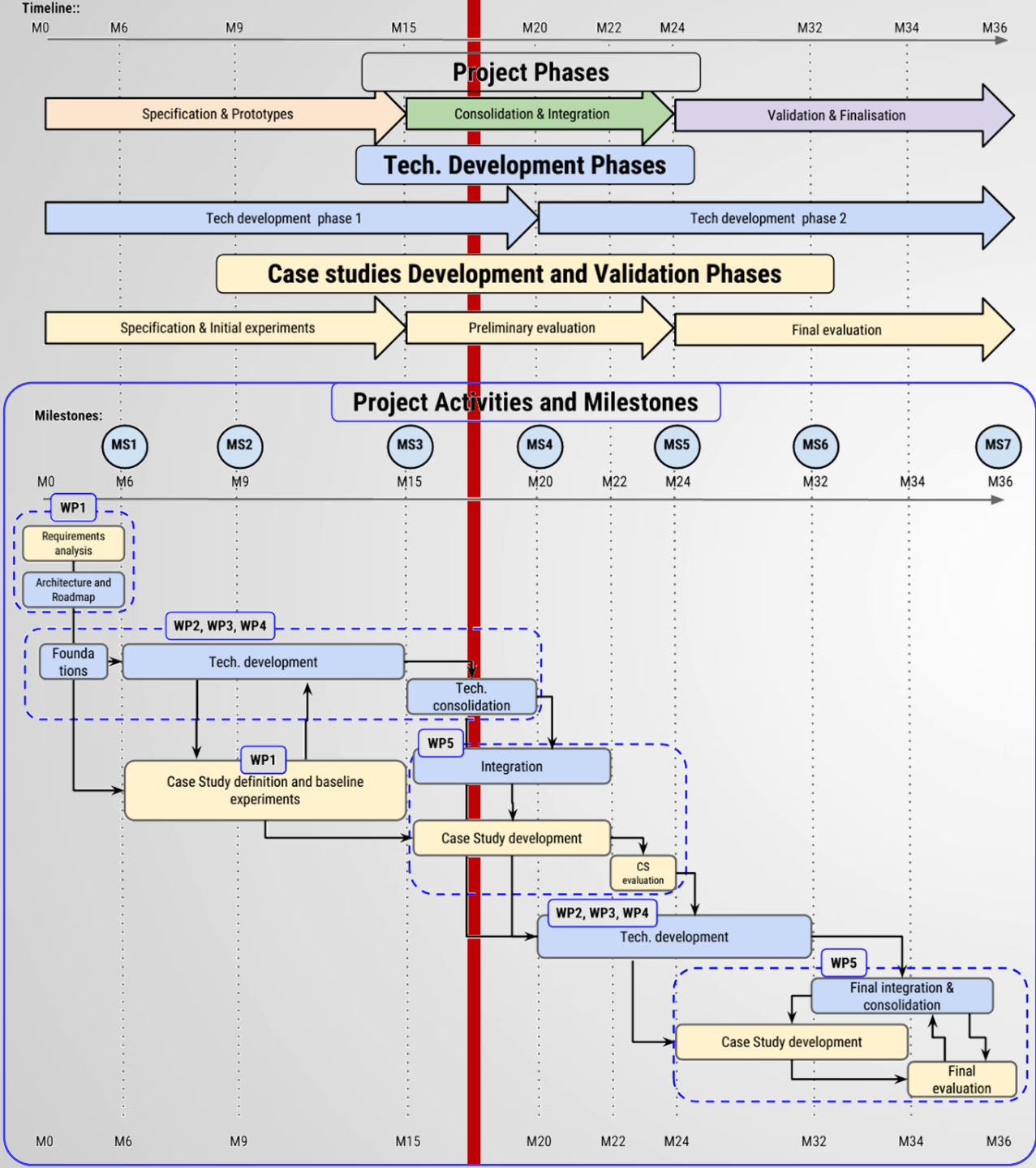


- D1.1 Industry requirements specification
- D1.2 Architecture specification and roadmap (Initial version)
- D1.3 Case studies scenarios definition
- D1.4 Architecture specification and roadmap (Final version)
- D2.1 Foundations for Model-driven Design Methods
- **D2.2 MegaM@Rt2 design tool set specification**
- **D2.3 MegaM@Rt2 design tool set (Initial version)**
- D3.1 Foundations for Model-Based Runtime Methods
- **D3.2 Specification of the MegaM@Rt2 Runtime Analysis tool set**
- **D3.3 MegaM@Rt2 Runtime tool set (Initial version)**
- D4.1 Foundations for Model Management and Traceability
- **D4.2 Specification of the MegaM@Rt Model Management & Traceability tool set**

What's next?

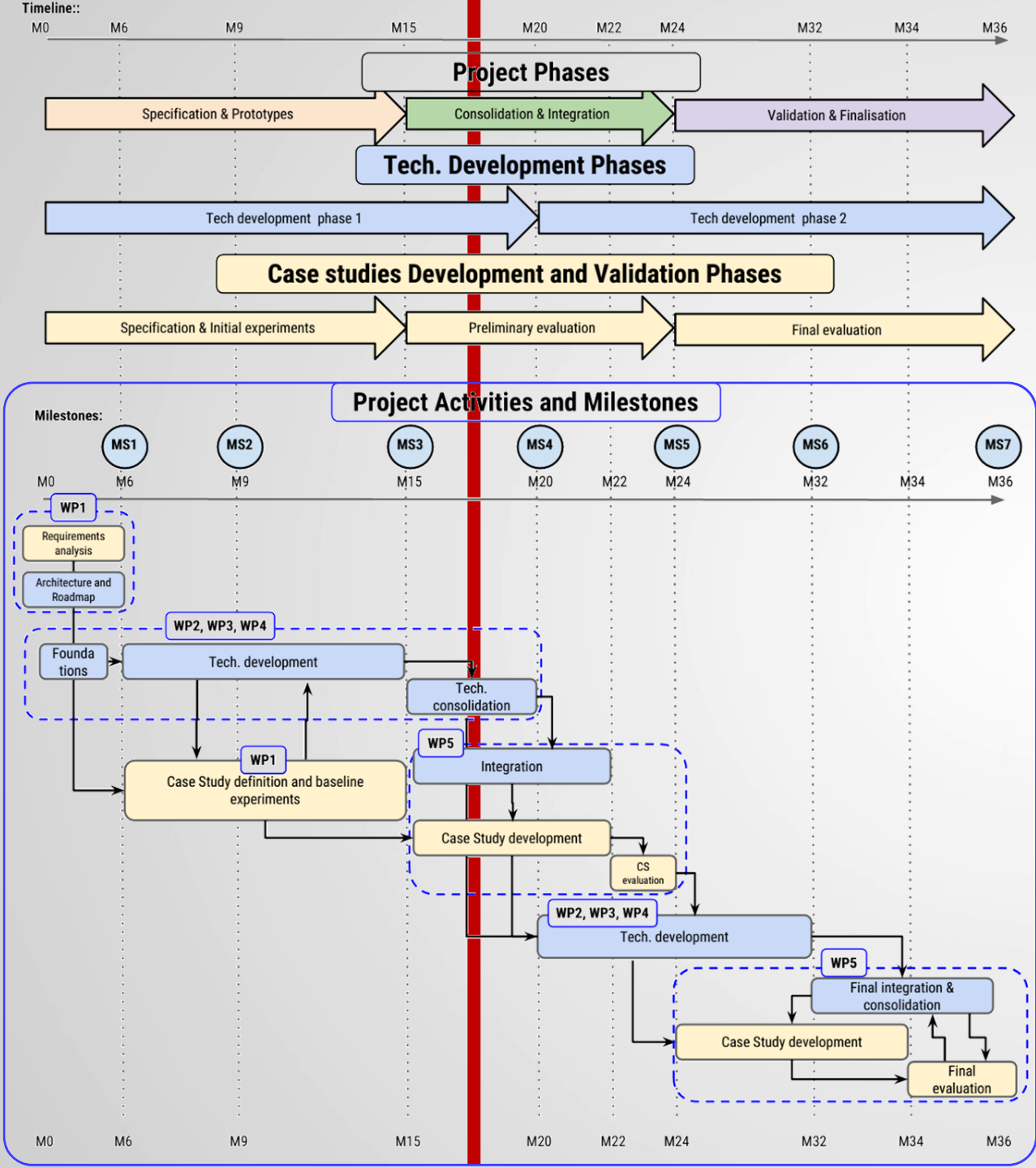


- D2.4 MegaM@Rt design tool set (intermediate version)
- D3.4 MegaM@Rt Runtime Analysis tool set (intermediate version)
- **D4.3 Model Management & Traceability tool set (initial version)**
- D5.1 MegaM@Rt Integration Approach
- D5.2 MegaM@Rt Integrated Framework (initial version)
- D5.4 Case study development report (Phase 1)



- **D2.4 MegaM@Rt design tool set (intermediate version)**
- **D3.4 MegaM@Rt Runtime Analysis tool set (intermediate version)**
- D4.3 Model Management & Traceability tool set (initial version)
- D5.1 MegaM@Rt Integration Approach
- D5.2 MegaM@Rt Integrated Framework (initial version)
- D5.4 Case study development report (Phase 1)





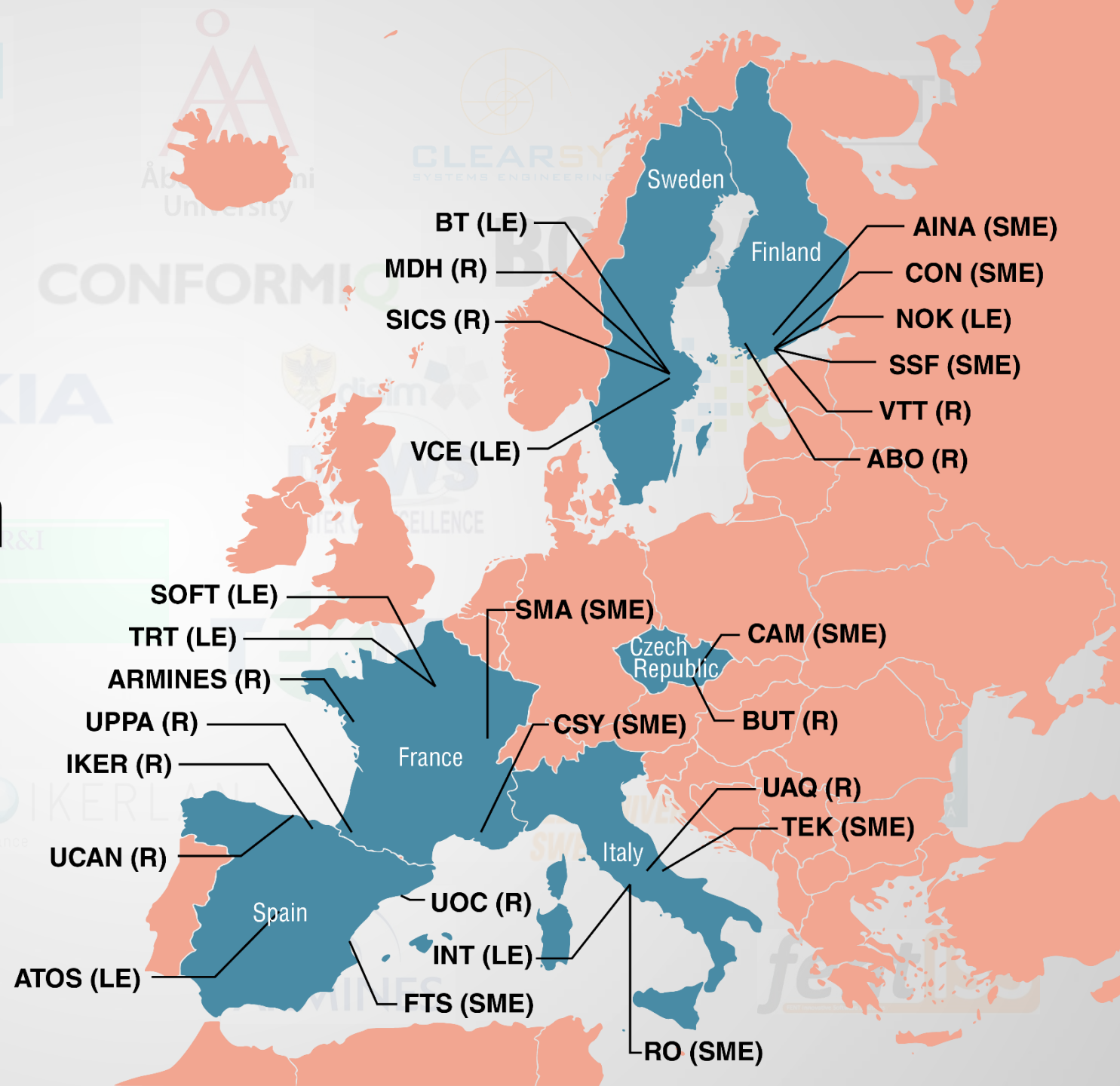
- D2.4 MegaM@Rt design tool set (intermediate version)
- D3.4 MegaM@Rt Runtime Analysis tool set (intermediate version)
- D4.3 Model Management & Traceability tool set (initial version)
- **D5.1 MegaM@Rt Integration Approach**
- **D5.2 MegaM@Rt Integrated Framework (initial version)**
- **D5.4 Case study development report (Phase 1)**

Who are we?



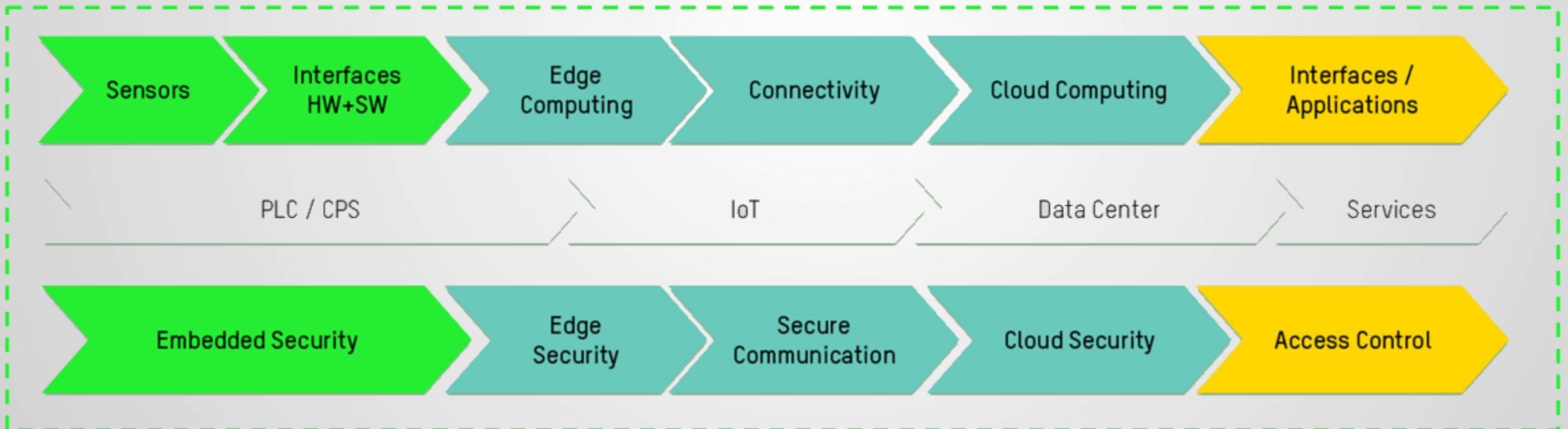


- 27 Partners from 6 European countries
  - 7 Large Enterprises
  - 9 Small and Medium Enterprises
  - 11 Universities or Research Centers

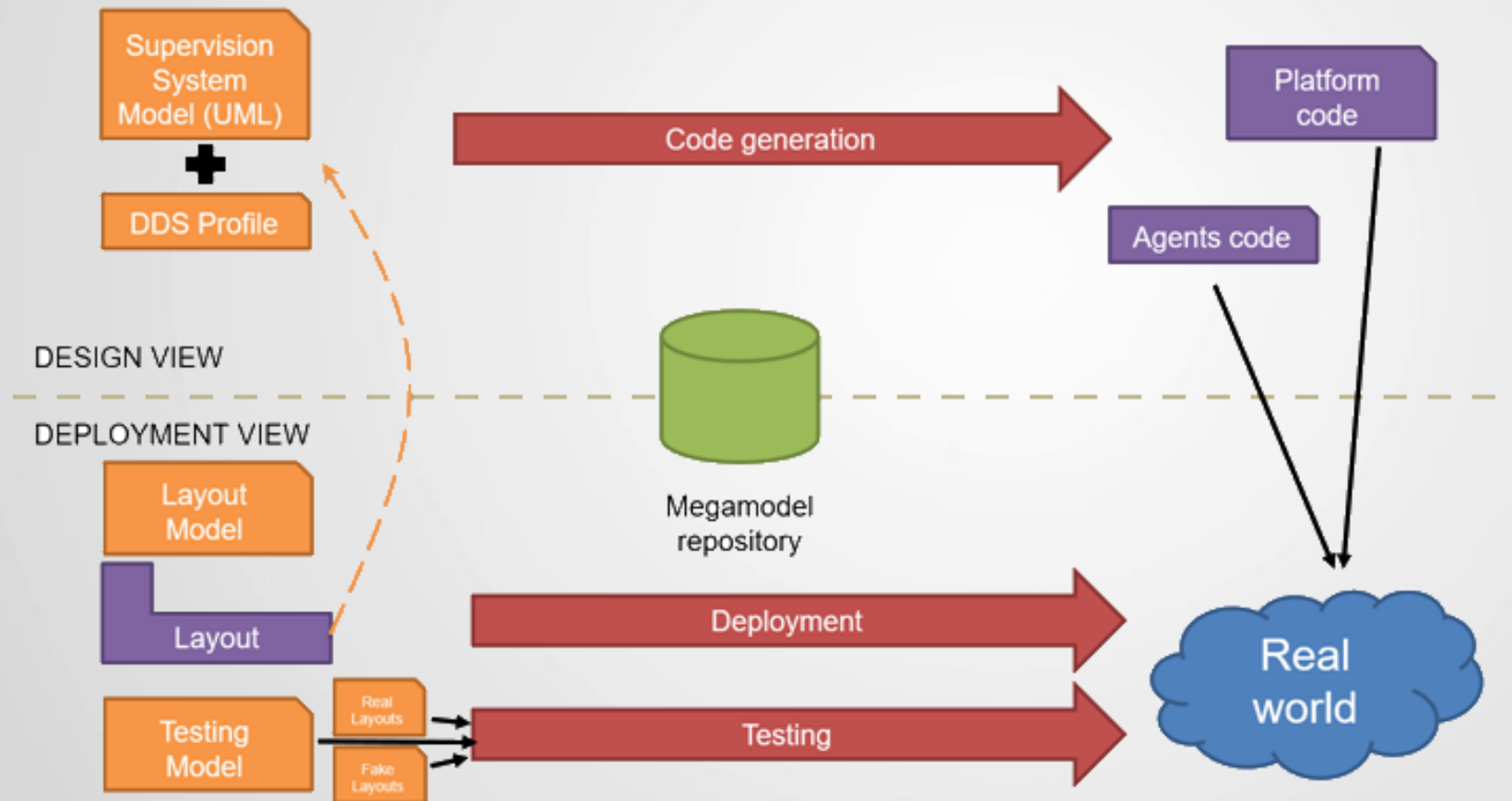


Selected case studies

# IKERLAN KONNEKT



# Workflow



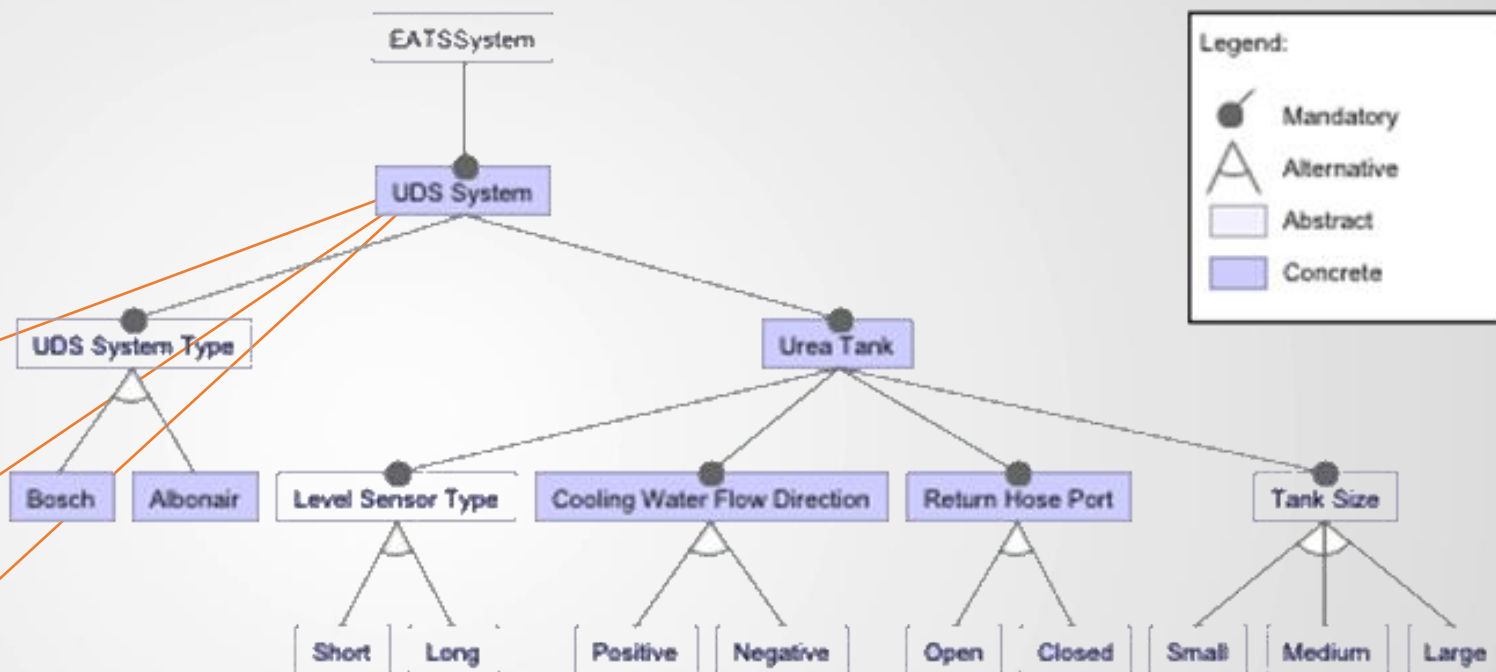
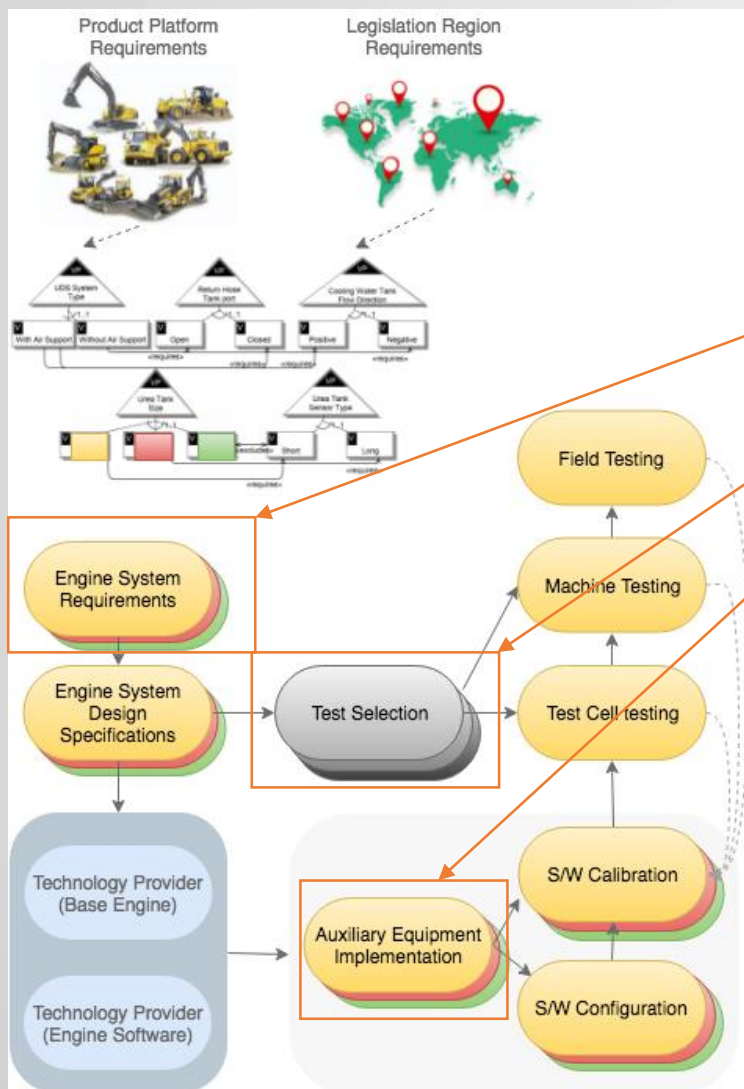
Smartesting

SOFTEAM  
Cadextan

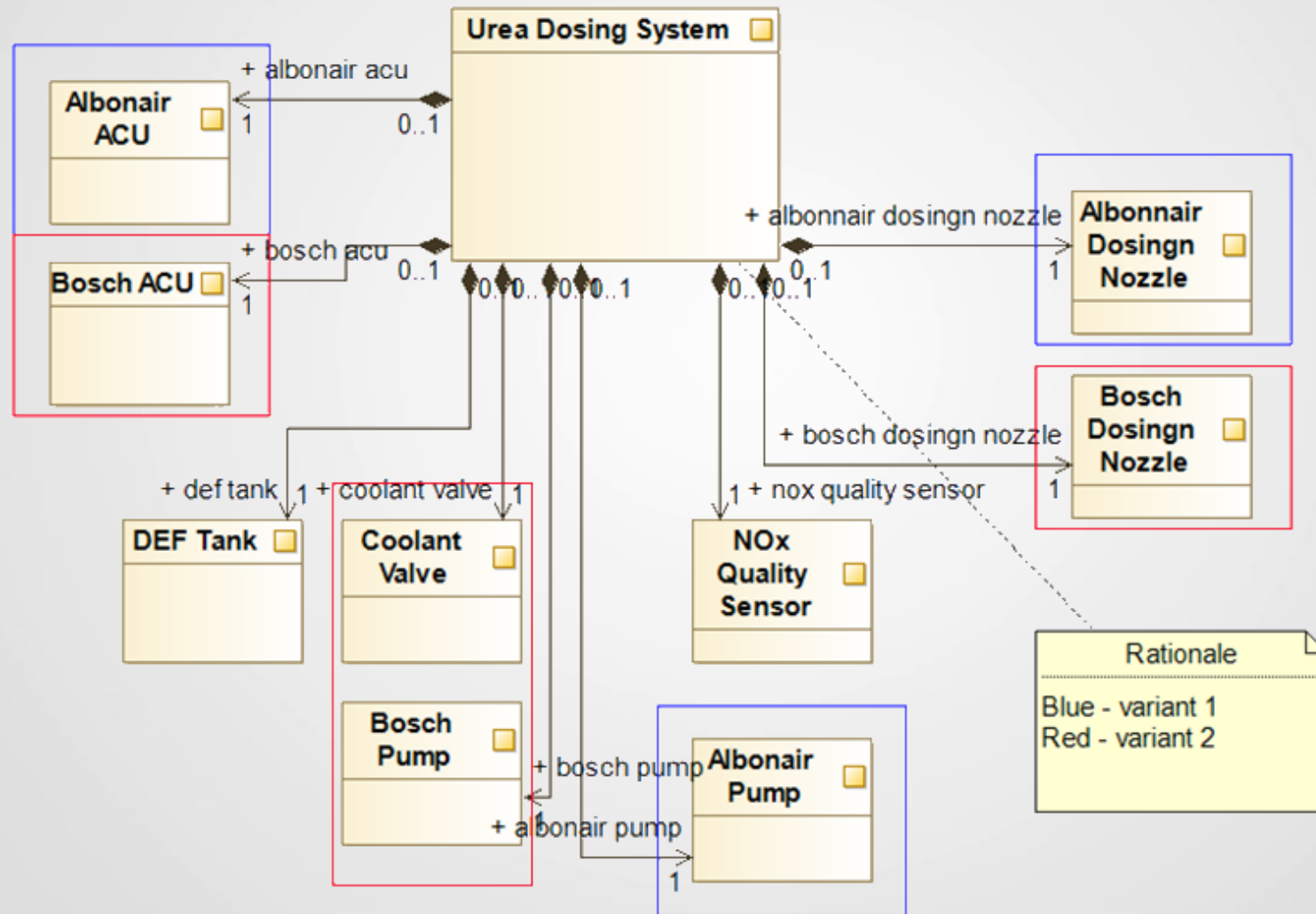
UNIVERSITÉ  
DE PAU ET DES  
PAYS DE L'ADOUR

UOC  
Universitat  
Oberta  
de Catalunya

# Volvo



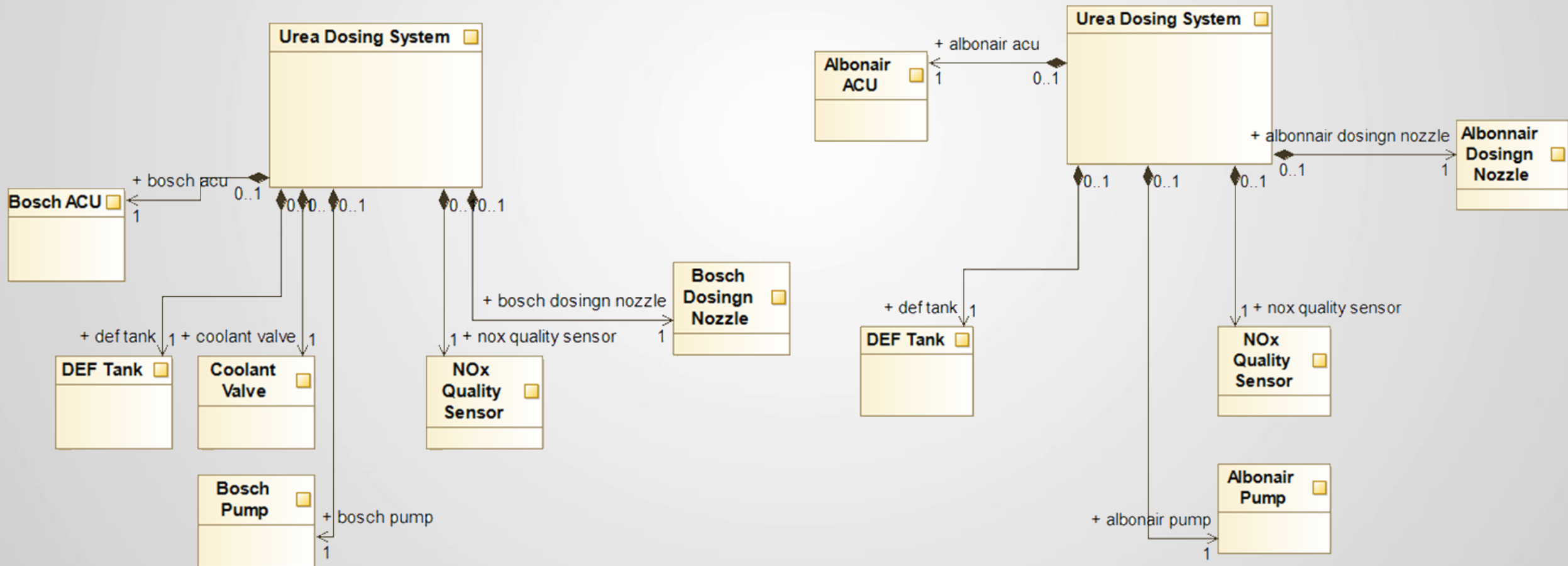
# SysML Model





# SysML variants

— According to some inputs (system req, tests, functionalities, etc.)





# Results and Future works

- Contribution to several standards
  - UML, SysML, CTF, VEL
- Increasing tool usage in different use cases
- Defining unified environment
- Defining unified methodology



**MegaM@Rt<sup>2</sup>**



[megamart2-ecsel.eu](http://megamart2-ecsel.eu)



[@megamart2-ecsel](https://twitter.com/megamart2-ecsel)

This Project has received funding from the Electronic Component Systems for European Leadership Joint Undertaking under grant agreement No. 737494. This Joint Undertaking receives support from the European Union's Horizon 2020 research and innovation program and from Sweden, France, Spain, Italy, Finland & Czech Republic.